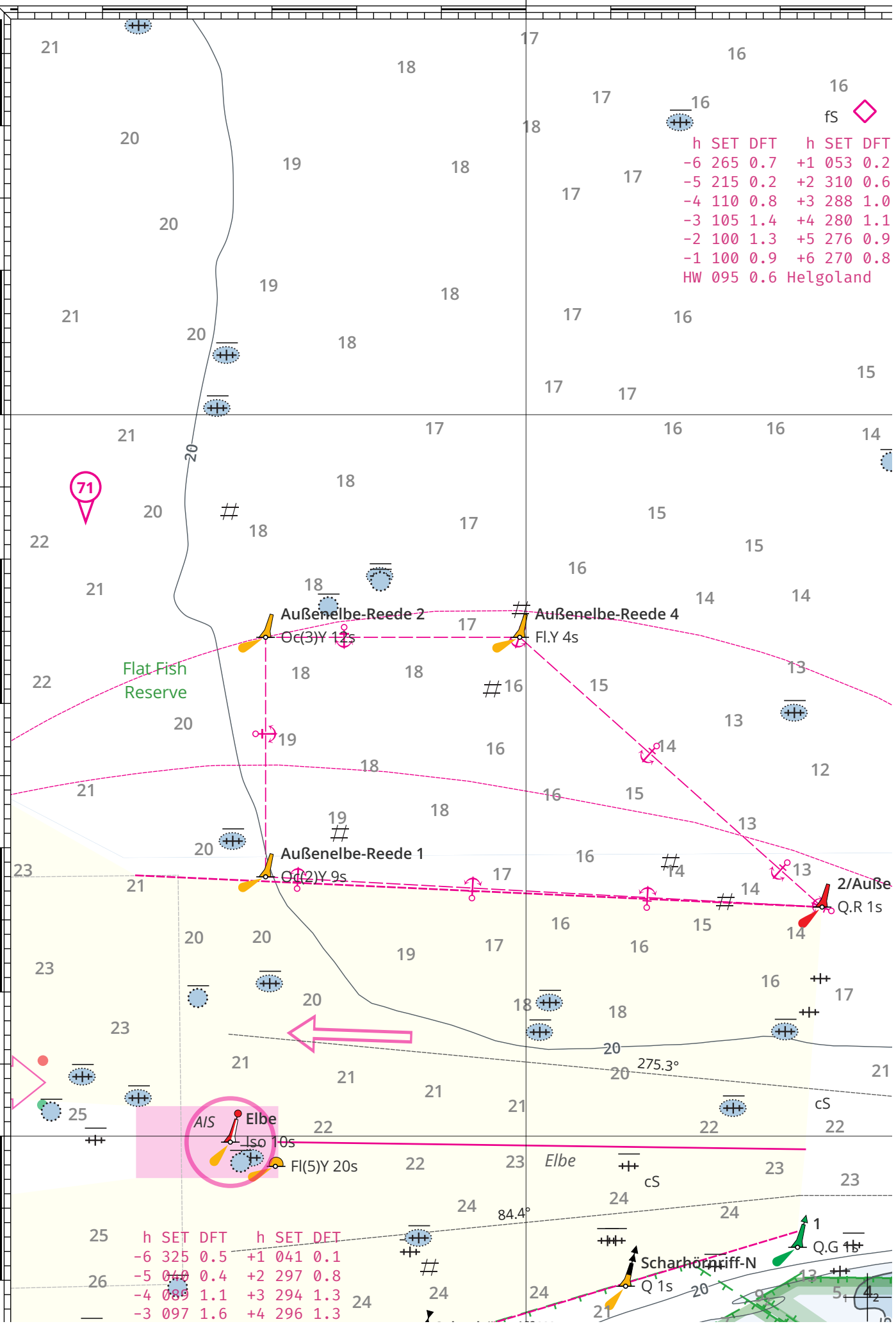


10'

05'

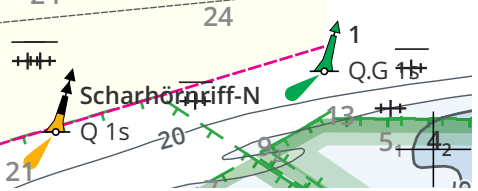
54°N

h	SET	DFT	h	SET	DFT
-6	265	0.7	+1	053	0.2
-5	215	0.2	+2	310	0.6
-4	110	0.8	+3	288	1.0
-3	105	1.4	+4	280	1.1
-2	100	1.3	+5	276	0.9
-1	100	0.9	+6	270	0.8
HW 095 0.6 Helgoland					



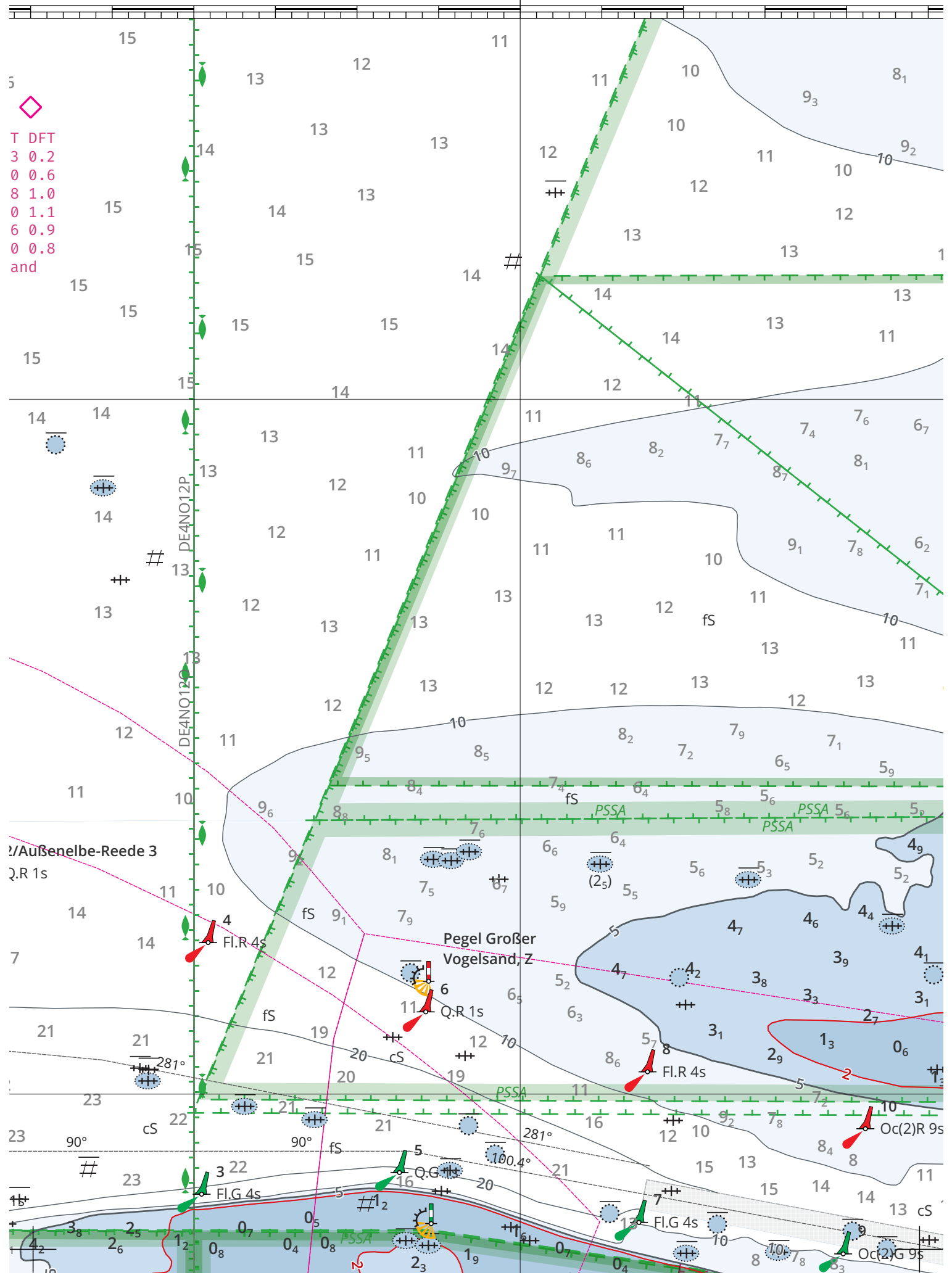
h	SET	DFT	h	SET	DFT
-6	325	0.5	+1	041	0.1
-5	070	0.4	+2	297	0.8
-4	089	1.1	+3	294	1.3
-3	097	1.6	+4	296	1.3

h	SET	DFT	h	SET	DFT
-6	270	0.8	+1	041	0.1
-5	070	0.4	+2	297	0.8
-4	089	1.1	+3	294	1.3
-3	097	1.6	+4	296	1.3

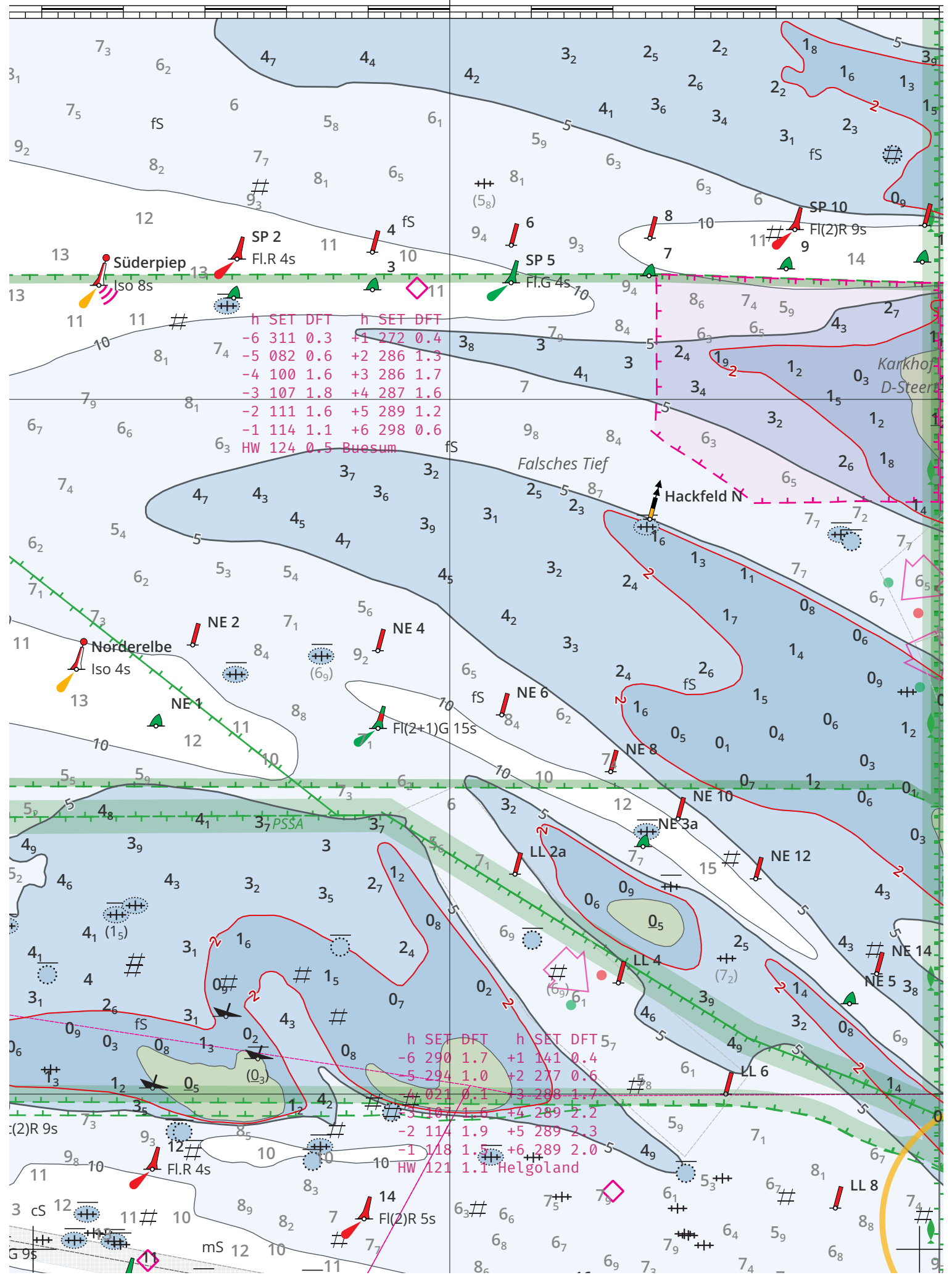


20'

- ◇
- T DFT
- 3 0.2
- 0 0.6
- 8 1.0
- 0 1.1
- 6 0.9
- 0 0.8
- and



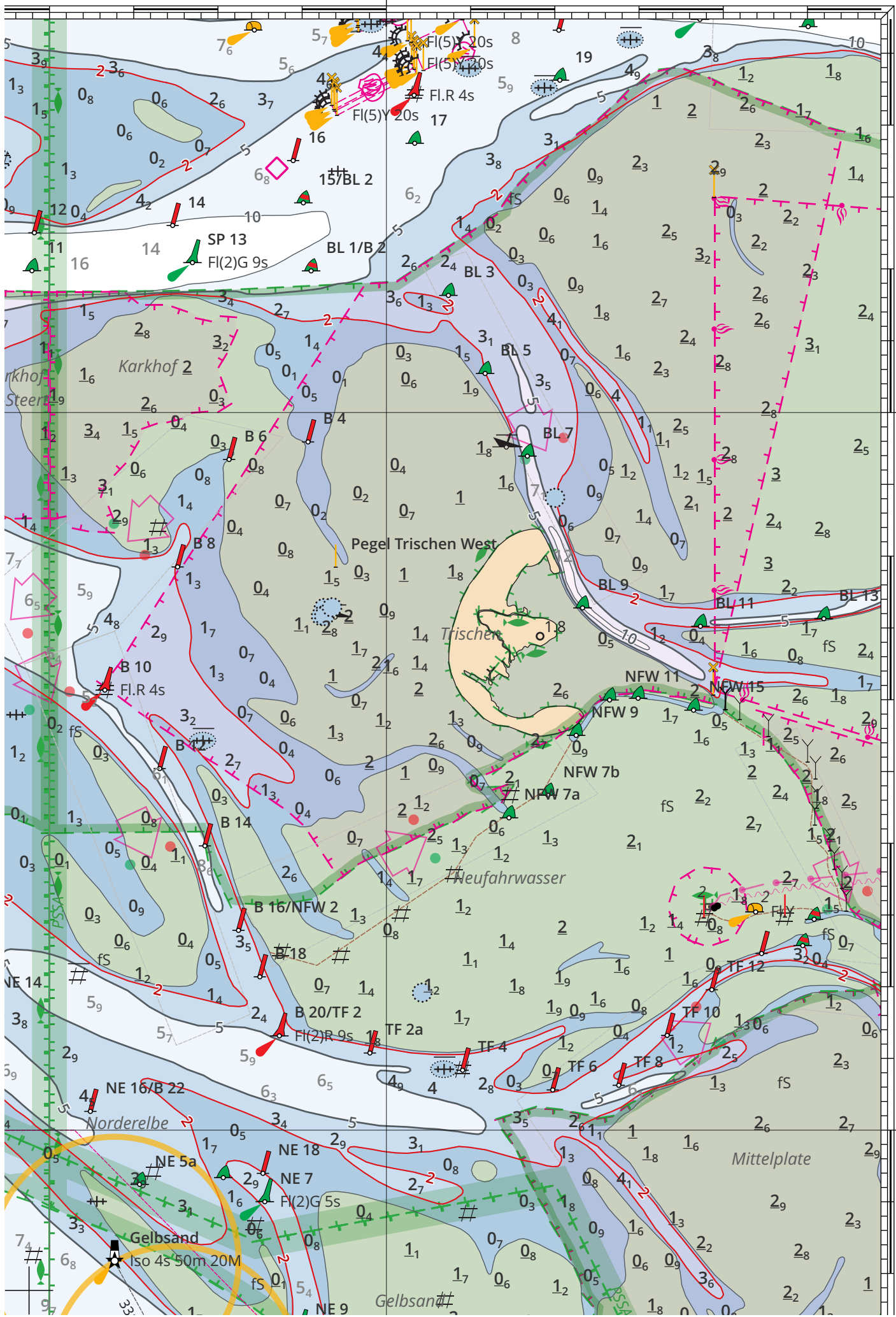
8°30'E



h	SET	DFT	h	SET	DFT
-6	311	0.3	+1	272	0.4
-5	082	0.6	+2	286	1.3
-4	100	1.6	+3	286	1.7
-3	107	1.8	+4	287	1.6
-2	111	1.6	+5	289	1.2
-1	114	1.1	+6	298	0.6
HW 124		0.5	Buesum		

h	SET	DFT	h	SET	DFT
-6	290	1.7	+1	141	0.4
-5	294	1.0	+2	277	0.6
-4	021	0.1	+3	288	1.7
-3	107	1.6	+4	289	2.2
-2	114	1.9	+5	289	2.3
-1	118	1.5	+6	289	2.0
HW 121		1.1	Helgoland		

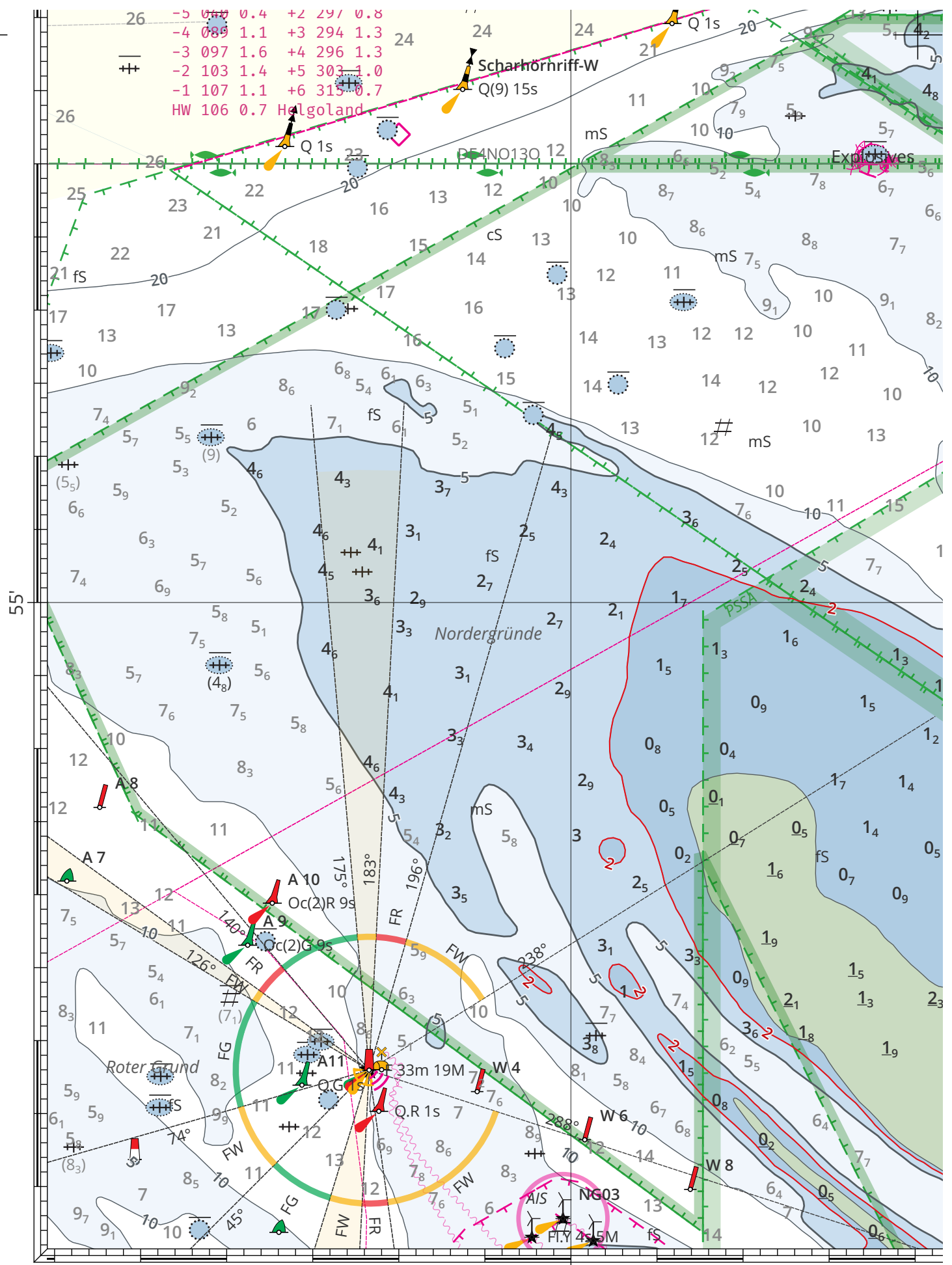
40'



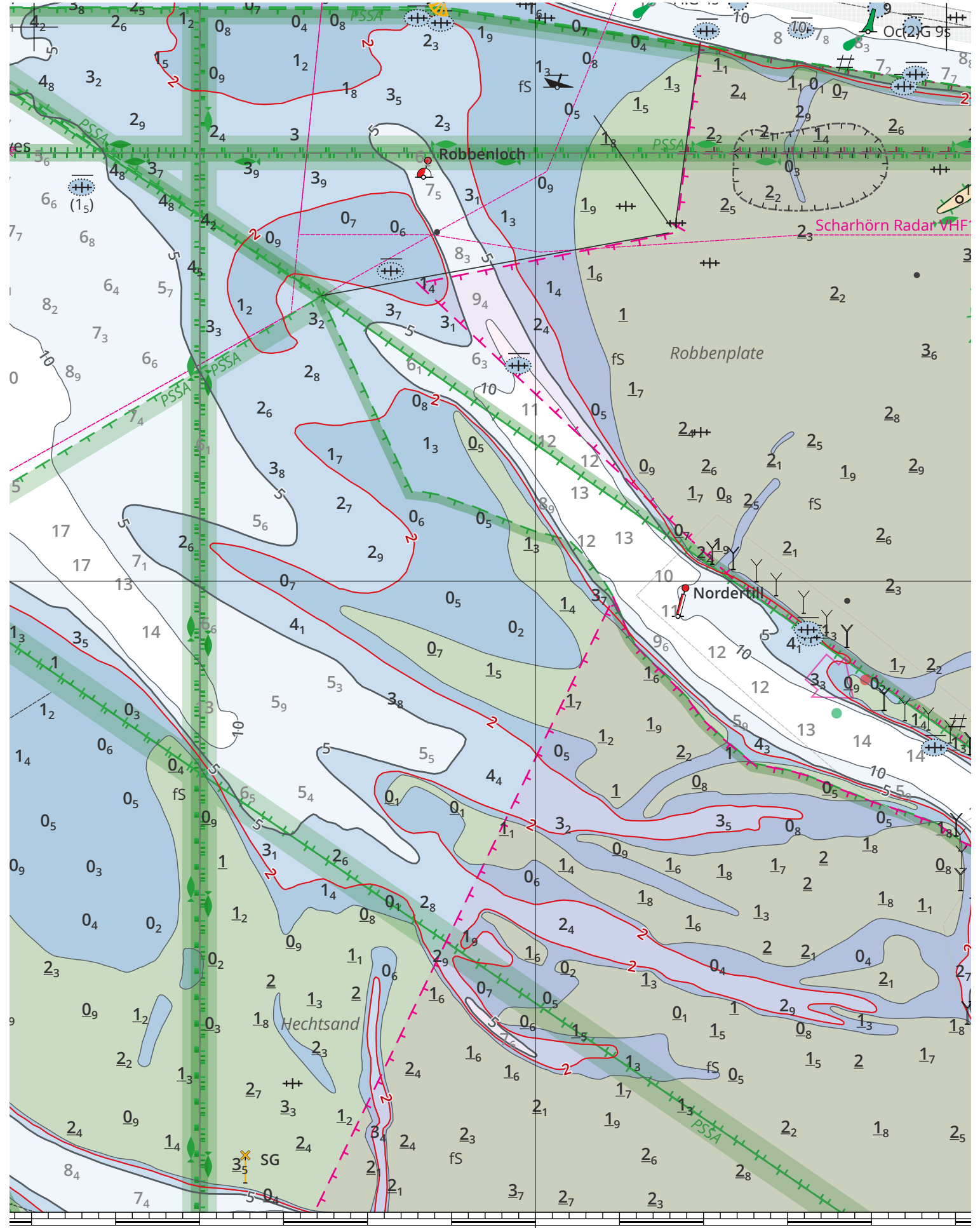
05'

54°N

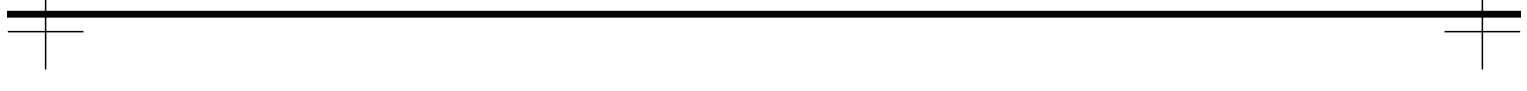
26	-5	077	0.4	+2	297	0.8
	-4	089	1.1	+3	294	1.3
	-3	097	1.6	+4	296	1.3
++	-2	103	1.4	+5	303	1.0
	-1	107	1.1	+6	315	0.7
		HW	106		0.7	

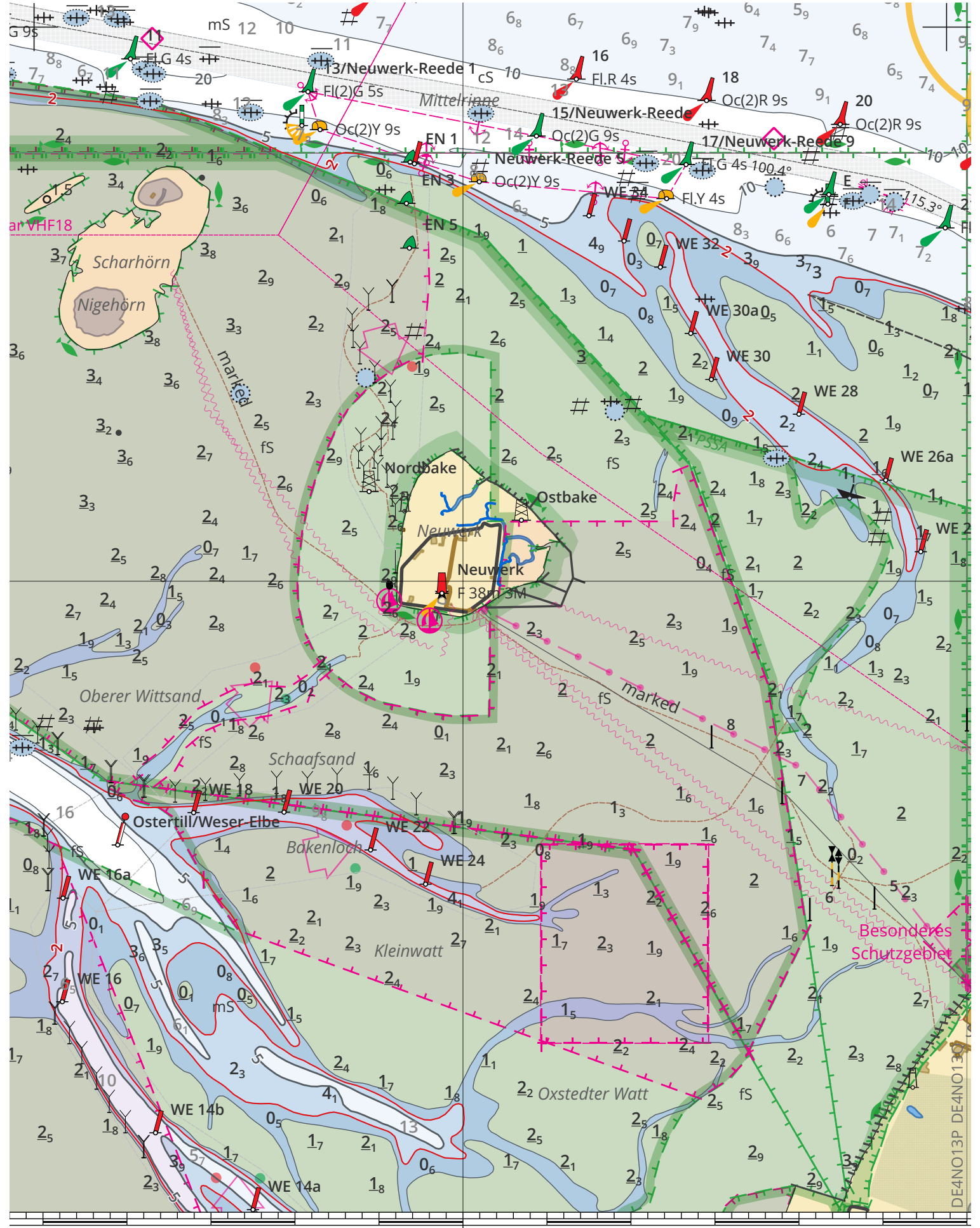


10'



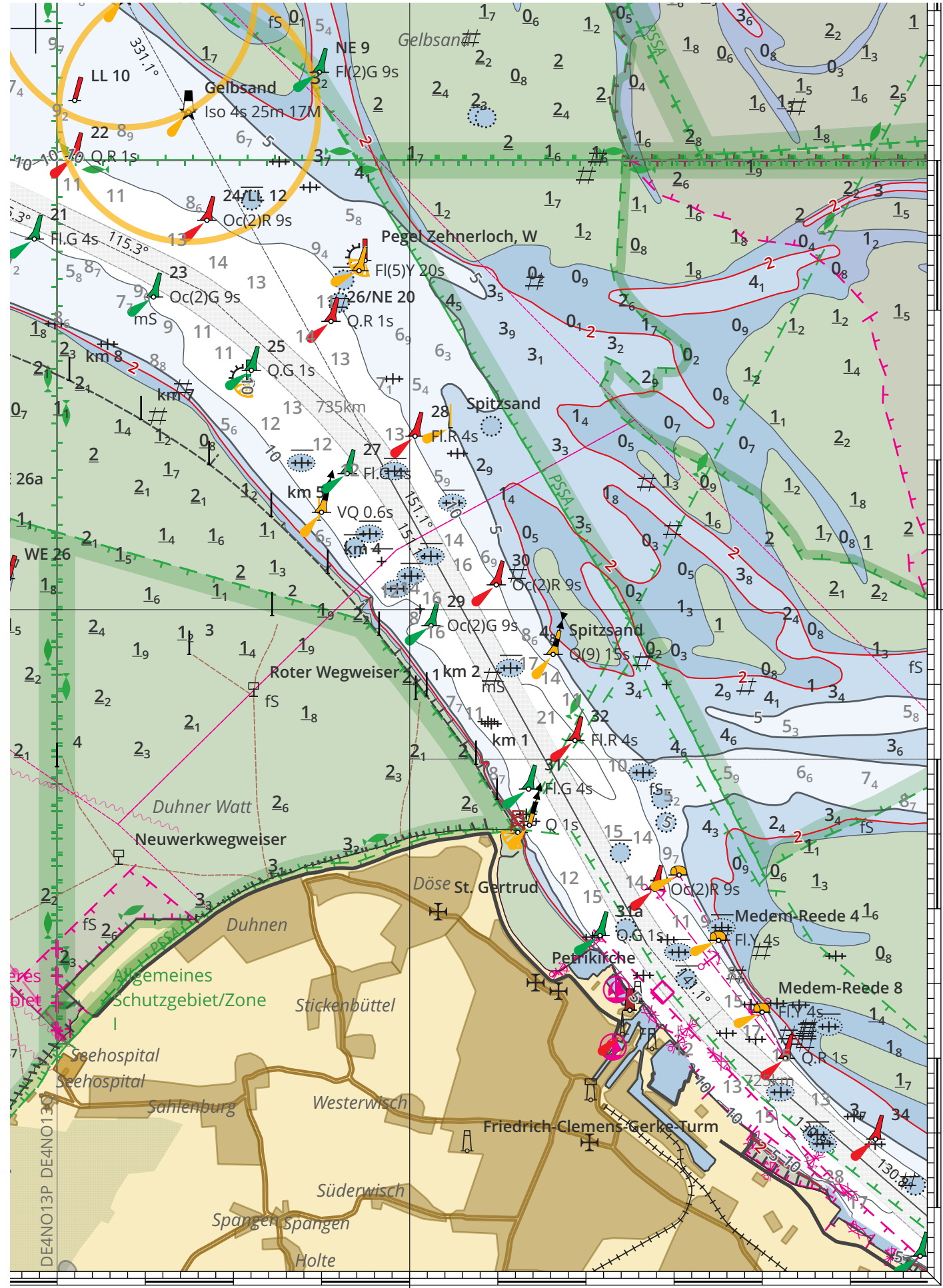
20'





8°30'E

DE4NO13P DE4NO130



55'

40'